

Revolutionize how you manage diagnostic data. iCare ALTIUS™ is a transformative, cloud-native platform that centralizes ophthalmic imaging and exam data—empowering clinicians to deliver faster, more accurate care.

Built on secure, HIPAA-compliant AWS infrastructure, iCare ALTIUS eliminates the need for local servers, manual backups, and IT overhead. Whether you’re in a single-location practice or a multi-site network, iCare ALTIUS gives you real-time access to patient data—anytime, anywhere.



Why iCare ALTIUS?

- **Zero IT Burden** – No installation. No maintenance. No training required. Just log in and go.
- **Seamless Device Integration** – Automatically syncs with iCare imaging systems like iCare EIDON® and iCare DRSplus®—no manual uploads or data transfers.
- **Visual Patient Timelines** – Chronologically organized imaging and annotations help track disease progression and support longitudinal care.
- **Advanced Comparison Tools** – Flicker and mosaic views allow clinicians to detect subtle changes over time with confidence.
- **Unlimited Users & Devices** – One license supports your entire team—across all locations and roles.
- **AI-Ready Architecture** – Designed to integrate with future AI diagnostic tools, keeping your practice on the cutting edge.



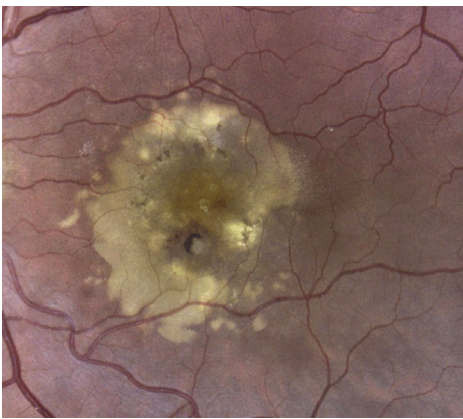
Built for Clinical Precision.  
Designed for Real-World Workflows.

iCare ALTIUS is more than a data platform—it’s a clinical accelerator. By unifying diagnostic data and streamlining access, iCare ALTIUS helps eye care professionals:

- Reduce diagnostic delays
- Improve documentation and compliance
- Enhance collaboration across teams and locations
- Deliver more proactive, personalized care

Case Study: Real-World Impact of iCare ALTIUS

Dr. Michael Lee, an ophthalmologist at VisionCare Clinic, implemented iCare ALTIUS to streamline diagnostic workflows. In one notable case, the clinic used iCare ALTIUS’s flicker comparison tool to detect early signs of a progressive retinal condition. This enabled timely intervention and preserved the patient’s vision. The ability to access historical images remotely and compare them in real time proved critical to the diagnosis.



What Your Peers Are Saying

“Adding iCare ALTIUS has allowed my practice to take review of retinal health to the next level. Seamless cloud review, automated functions, and ease of use make iCare ALTIUS ideal for any busy eye care practice looking for a secure, HIPAA compliant image management software.”

— Dr. John Warren

Key Features at a Glance

Feature	Benefit
✔ Cloud-Based Access	✔ Secure, real-time access from any device
✔ Automatic Uploads	✔ No manual steps—images appear instantly
✔ Visual Timelines & Annotations	✔ Track disease progression with clarity
✔ Flicker & Mosaic Comparison	✔ Detect subtle changes with precision
✔ Unlimited Users & Devices	✔ Scale effortlessly across your practice
✔ AI-Ready	✔ Future-proof your diagnostic capabilities

Ready to Elevate Your Practice?

Visit [icare-world.com/us/product/icare-altius/](https://icare-world.com/us/product/icare-altius/) to schedule a demo.

\*All clinical features are provided by iCare ALTIUS CW, a medical device cleared by the U.S. FDA under the 510(k) process. These features are intended to support clinical decision-making within the scope of its cleared indications for use.

iCare ALTIUS CW is intended for sale and use only in the United States. It is not CE-marked and is not available for sale or use in the European Union or other jurisdictions where regulatory clearance is required. Centervue S.P.A. is the legal manufacturer of iCare ALTIUS CW.